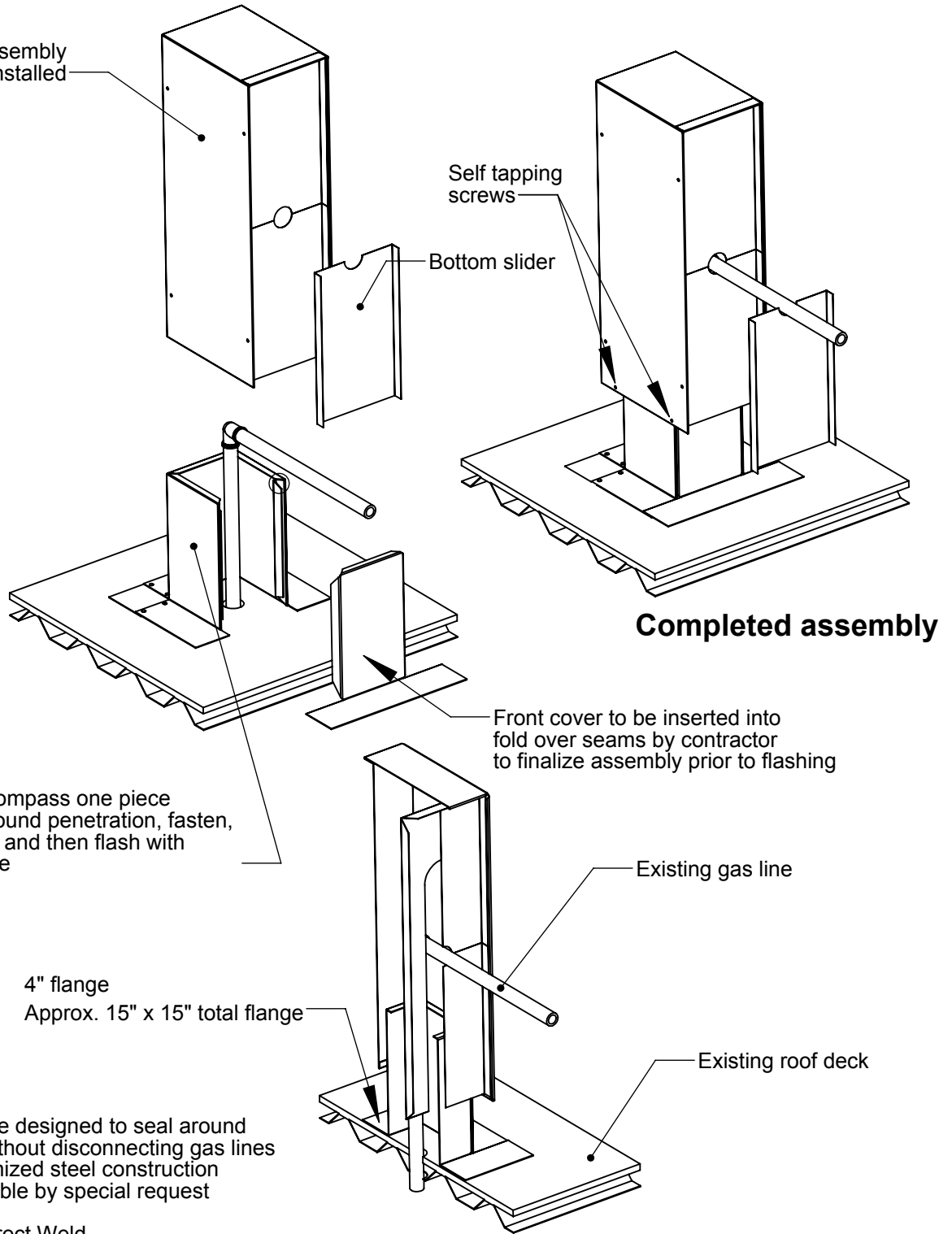


Part #

600-1520

Gas Retro Box

Top box sub-assembly with top slider installed



Position and encompass one piece sub-assembly around penetration, fasten, install front cover and then flash with roofing membrane

4" flange
Approx. 15" x 15" total flange

Features

- Gas Retro Boxes are designed to seal around existing gas lines without disconnecting gas lines
- Heavy gauge galvanized steel construction
- Custom sizes available by special request
- Patented
- Available in TPO Direct Weld

Innovative Ideas Since 1978

PROPRIETARY AND CONFIDENTIAL

THE INFORMATION CONTAINED IN THIS DRAWING IS THE SOLE PROPERTY OF MENZIES METAL PRODUCTS. ANY REPRODUCTION IN PART OR AS A WHOLE WITHOUT THE WRITTEN PERMISSION OF MENZIES METAL PRODUCTS IS PROHIBITED.

DATE: 3/28/16

DRAWN BY: ZV

COMMENTS:

DO NOT SCALE DRAWING

Part title & J#

SIZE

A



Gas Retro Box

19370 - 60th Ave., Surrey, BC V3S 3M2

Ph: 604-530-0712

Fax: 604-530-8482

www.menzies-metal.com